



**MODEL** SUZUKI DL V-STROM 650

**YEAR** 2012-->

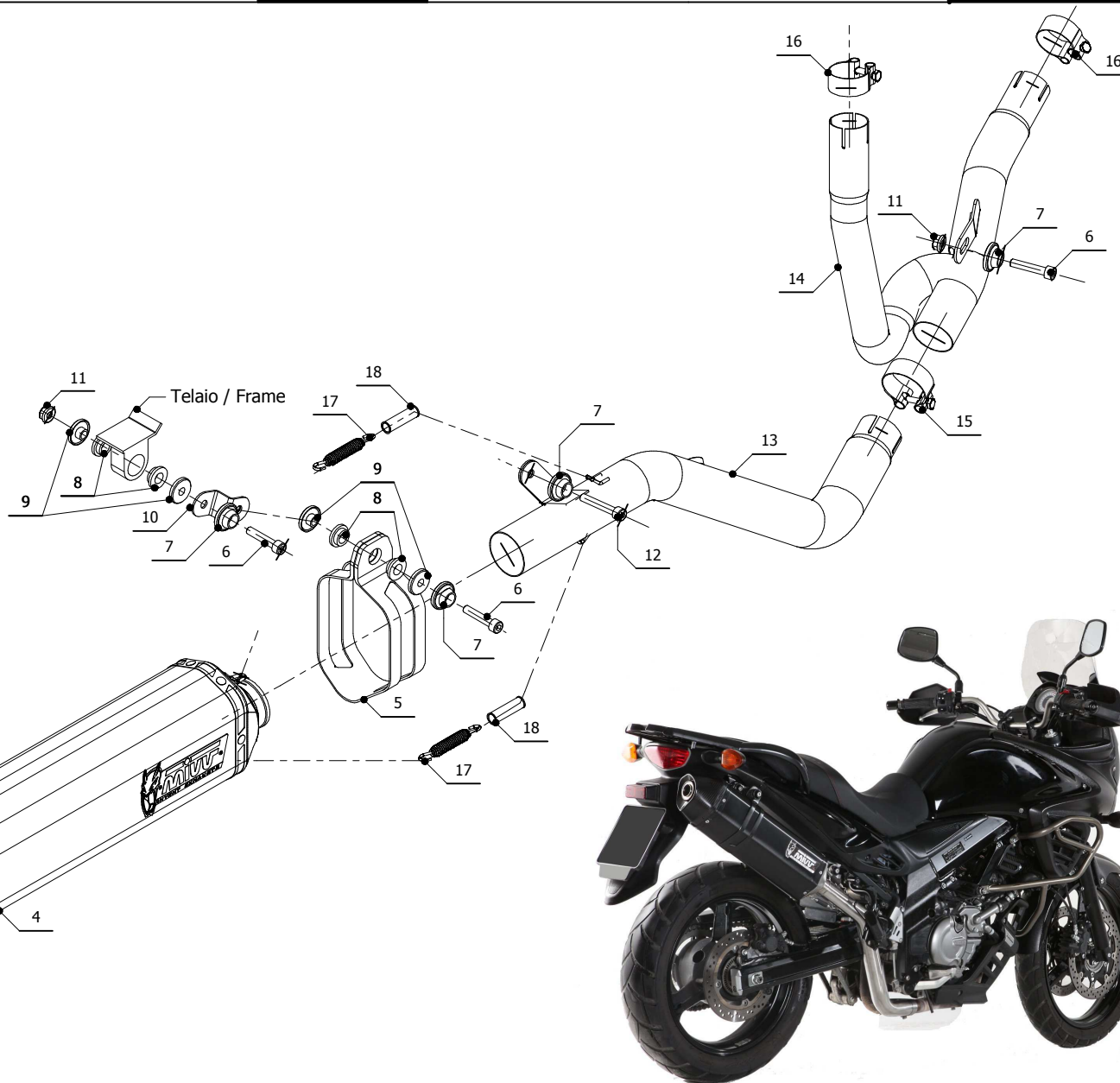
**LINE** SPORT

**MUFFLER** SPEED EDGE

**SCHEMATIC**

**ELENCO PARTI / PARTS LIST**

#	QTÀ / QTY	DESCRIZIONE / DESCRIPTION	CODICE / CODE
1	1	Vite M5 x 8 / Screw M5 x 8	50.73.459.1
2	1	DB killer / DB killer	50.DK.088.0
3	1	Tappo in gomma / Rubber stopper	50.73.266.1
4	1	Silenziatore / Muffler	SPEED EDGE 400
5	1	Staffa in carbonio / Carbon fiber bracket	50.SS.814.1
6	3	Vite M8x40 / Screw M8x40	50.73.075.1
7	4	Rondella in alluminio nera / Black aluminium washer	50.73.221.1
8	4	Silentblock / Silentblock	50.73.380.1
9	4	Boccola / Bush	50.73.381.1
10	1	Staffa / Bracket	50.SS.009.0
11	2	Dado M8 flangiato / Flanged nut M8	50.73.393.1
12	1	Vite M8x50 / Screw M8x50	50.73.074.1
13	1	Tubo di raccordo / Link pipe	9773S038SHX
14	1	Tubo no kat / No kat pipe	9773S038C1
15	1	Fascetta Ø 48/51 mm / Pipe clamp Ø 48/51 mm	50.FA.007.1
16	2	Fascetta Ø 40/43 mm / Pipe clamp Ø 40/43 mm	50.FA.005.1
17	2	Molla lunga / Long spring	50.71.080.1
18	2	Tubo in gomma per molla / Rubber pipe for spring	50.73.210.1



**APPLICAZIONI / APPLICATIONS**

CODICE / CODE	TUBO / PIPE	SILENZIATORE / MUFFLER	FASCETTA / CLAMP
S.038.LRX	INOX / ST. STEEL	INOX (COPPE CARBONIO) / ST. STEEL (CARBON CAPS)	CARBONIO / CARBON FIBER
S.038.LRB	INOX / ST. STEEL	STEEL BLACK	CARBONIO / CARBON FIBER